

ROCLINK™ Configuration Software for DOS

ROCLINK Configuration Software for DOS is used to configure and monitor ROC300-Series Remote Operation Controllers (with a FlashPAC or ROCPAC), FloBoss™ 407 Flow Managers, and FloBoss 500-Series Flow Managers, including all Canadian custody transfer versions. Some of the many functions provided are: configuring I/O points, AGA flow calculations, and the history database; calibrating meter inputs (using up to five calibration points); and retrieving log data.

The software requires at least 450 KB of RAM and runs on a personal computer (minimum of a 486DX processor) using DOS 5.0 or higher. It can also run as a DOS application with Microsoft® Windows® 3.1, 95, 98, or NT. The computer needs a high-density 3.5-inch floppy drive, 640 KB of base RAM, and 10 MB of free hard drive space.

ROCLINK software for DOS is designed for ease of use. Pull-down menus simplify accessing the functions provided by the software, and dialog boxes help to direct selections and data entry. Actions can be performed either by using the keyboard or by using a pointing device, such as a mouse.

The User Interface

ROCLINK software for DOS employs a character-based graphical user interface, similar in many ways to the Windows operating system. Upon logging on to the ROCLINK software, you see the available functions presented in drop-down menus (see Figure 1).

When you select an item from a menu, a screen appears that provides the requested information in an easy-to-read format and lets you enter the applicable configuration data.

The menu structure lists choices from which you can select the desired function. Some items, when selected, bring up another menu, which lists additional functions. Once a function is selected, the associated screen or dialog box displays.

Help screens can be accessed either from the Help menu or in a context-sensitive fashion from within the menus and screens. This feature makes it easy to obtain on-line information for any ROCLINK topic.

A typical screen (see Figure 1) displays parameters and their associated values or selected options. Values are contained in data fields, many of which can be edited. Some parameters have options listed below them, with the selected option marked. Pushbuttons bring up dialog boxes for further configuration details, or perform a desired action, such as the Save pushbutton shown in Figure 1.

The pushbuttons can be activated either by clicking with a mouse or by pressing a key (the Enter key or a function key). A status line at the bottom of the screen contains pertinent information about the option or parameter currently highlighted.

Dialog boxes are areas that “pop up” on the screen, allowing further selections to be made or values to be entered. They can also display to provide messages and more detailed information.

Figure 2 shows the overall menu structure for the software functions. Note that some functions may not be available, depending on the user’s access level and the way that the FloBoss or ROC is equipped.

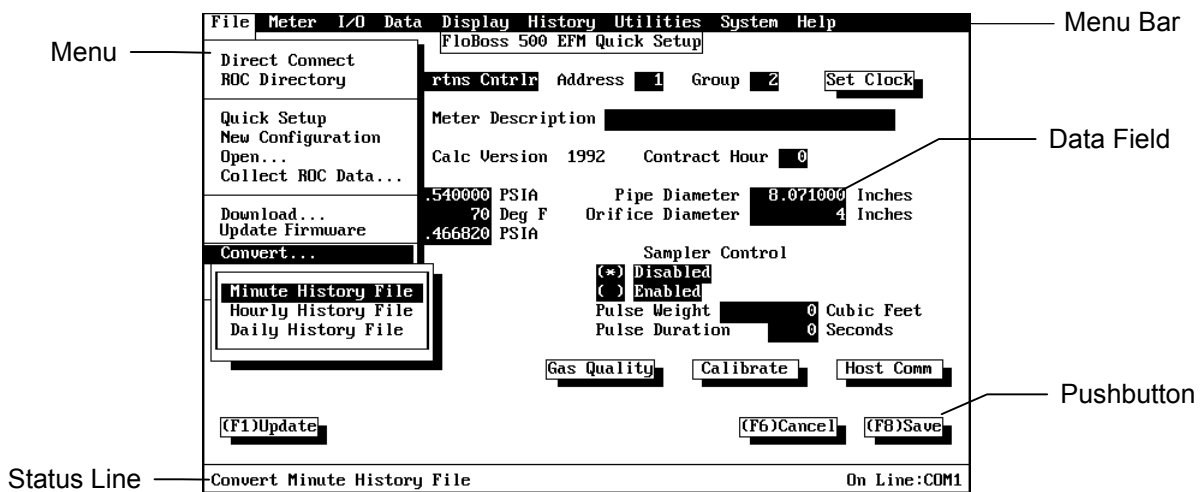


Figure 1. Sample Configuration Screen

<p>File</p> <ul style="list-style-type: none"> Direct Connect ROC Directory Upgrade to FlashPAC³ Quick Setup³ New... <ul style="list-style-type: none"> FB503/553 Configuration FB504 Configuration³ Open.. <ul style="list-style-type: none"> Event File Alarm File Audit Log File Minute History File Hourly History File Daily History File ROCPAC Config. File FLASH Config. File Collect ROC Data...² <ul style="list-style-type: none"> All EFM Report History Events/Alarms Download...² <ul style="list-style-type: none"> ROC Config. to Disk Disk Config. to ROC User Programs³ Update Firmware³ Update Hardware³ Configure ROCLINK Convert... <ul style="list-style-type: none"> Minute History File Hourly History File Daily History File ROCLINK Security¹ Print Configuration² EFM Reports¹ Macros...¹ <ul style="list-style-type: none"> Record Macro Play Macro Stop Recording Exit 	<p>Meter</p> <ul style="list-style-type: none"> Plate Change Calibration Setup Gas Quality History³ EFM Reports Select Meter Type^{2,3} <p>I/O</p> <ul style="list-style-type: none"> MVS Sensor³ Analog Inputs Analog Outputs³ Discrete Inputs³ Discrete Outputs³ Pulse Inputs³ <p>Data</p> <ul style="list-style-type: none"> PID Control³ FST... <ul style="list-style-type: none"> Register Editor Soft Points Tank Monitoring³ Radio Control³ Opcode Setup Modbus³ <ul style="list-style-type: none"> Modbus Config³ Modbus Registers³ User List Setup LCD Setup³ User Data³ <p>Display</p> <ul style="list-style-type: none"> New Display Display 1³ Display 2³ Display on Disk Monitor... <ul style="list-style-type: none"> Flow Discrete Input³ Discrete Output³ Analog Input Analog Output³ Pulse Input³ PID Loop³ 	<p>History</p> <ul style="list-style-type: none"> Setup Min/Max Minute Hour Day Events Alarms Audit Log³ <p>Utilities</p> <ul style="list-style-type: none"> User Programs³ Security... <ul style="list-style-type: none"> ROCLINK Operator FB500 Logon Op³ ROC400 LCD Op³ ROC300 LCD Op³ Macros... <ul style="list-style-type: none"> Record Macro Play Macro Stop Recording ROC Memory AI Calibration³ MVS Calibration³ Calibration Values³ <p>System</p> <ul style="list-style-type: none"> Clock Information Flags Comm Ports <p>Help</p> <ul style="list-style-type: none"> Getting Started Keys Help Contents About <p>KEY:</p> <ul style="list-style-type: none"> ¹ Initial menu only ² Not included on initial menu ³ Device Dependent
---	--	---

Figure 2. Menu Tree for the ROCLINK Software

Customizing Features

You can build custom displays for the FloBoss or ROC that combine both graphic and dynamic data elements. Using ROCLINK software for DOS, the displays can then be used to monitor the operation of a FloBoss or ROC in its application, either locally or remotely.

ROCLINK can record custom sequences called macros, which can “play back” dozens of keystrokes at a time.

Security

ROCLINK software for DOS provides multiple levels of security for controlling access to ROCLINK functions, as well as the FloBoss/ROC database. Making changes to passwords or to the access level for personnel is accomplished through the Security menu, which is available only to authorized personnel.

FloBoss and ROCLINK are marks of one of the Emerson Process Management companies. The Emerson logo is a trademark and service mark of Emerson Electric Co. All other marks are the property of their respective owners.
The contents of this publication are presented for informational purposes only. While every effort has been made to ensure informational accuracy, they are not to be construed as warranties or guarantees, express or implied, regarding the products or services described herein or their use or applicability. Fisher Controls reserves the right to modify or improve the designs or specifications of such products at any time without notice.

Emerson Process Management

Flow Computer Division

Marshalltown, IA 50158 U.S.A.
 Houston, TX 77065 U.S.A.
 Pickering, North Yorkshire UK Y018 7JA

