

ROCLINK™ for Windows Configuration Software

ROCLINK for Windows Configuration Software provides the capability to monitor, configure, and calibrate ROC300-Series Remote Operations Controllers, FloBoss™ 103, 407, and 500-Series Flow Managers. With ROCLINK for Windows, users can:

- Configure and view I/O points, flow calculations, PID control loops, system parameters, and power management features
- Log and report history data
- Log and report events and alarms
- Perform five-point calibration on analog inputs, including multi-variable sensor inputs
- Implement user security levels
- Create and edit graphical displays
- Create and edit Function Sequence Tables (FSTs)
- Set up communications parameters for direct connection, radio interface, telephone modems, and other communications methods.

ROCLINK for Windows software is designed for ease of use. A Windows Explorer-style menu tree makes navigating among the key functions provided by the software quick and easy. Drop-down menus simplify

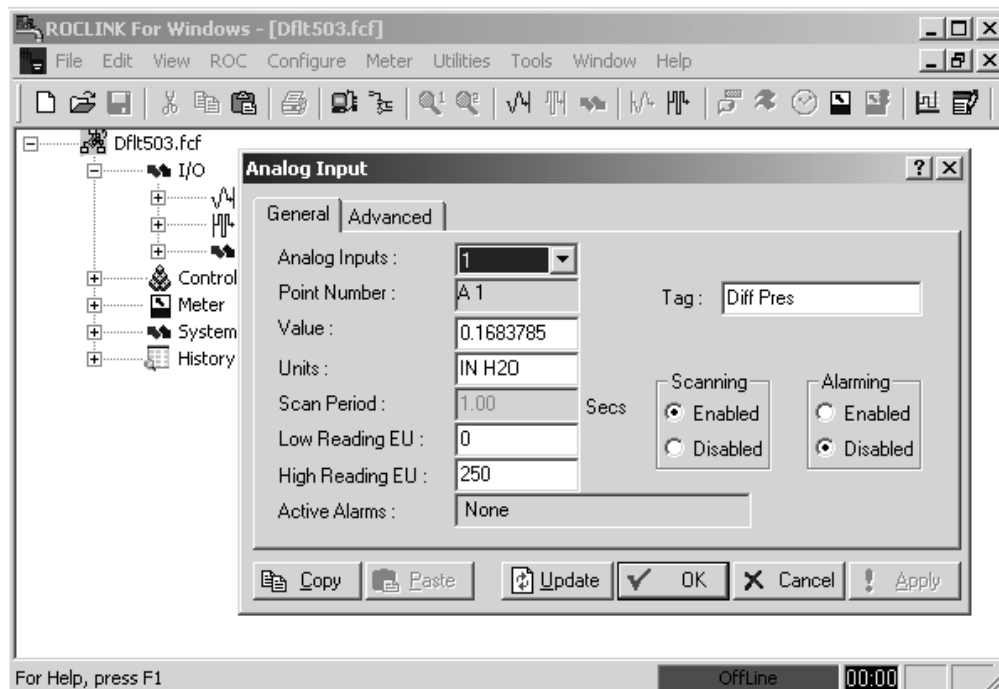
accessing the functions provided by the software (see Table 1). Dialog boxes and drop-down list boxes help to direct selections and data entry. Actions can be performed with the keyboard or a pointing device, such as a mouse.

Help screens are accessed either from the Help menu or by using the F1 function key. This feature makes it easy to access on-line information for any topic.

The software is designed to run on an IBM-compatible personal computer (PC) having the following minimum requirements:

- Pentium-class processor (233 MHz or greater recommended)
- CD-ROM drive
- Windows 95 (Service Pack B), 98, ME, 2000, XP, or Windows NT 4.0
- 32 MB of RAM
- SVGA color monitor, 800 x 600 pixels
- 10 MB of available hard disk space.

The software and user documentation are supplied on a CD-ROM.



Typical Configuration Screen

Table 1. Menu Tree for ROCLINK for Windows

File Menu New Open Download Close Save Configuration Print Configuration Quick Setup Print Print Setup [List of recent files] Exit	Edit Menu Undo Cut Copy Paste	View Menu Directory EFM Report Calibration Report History Alarms Events Audit Log Display I/O Monitor Toolbar	ROC Menu Direct Connect Disconnect/Connect Collect Data Clock Security Comm Ports Memory Information Flags	Configure Menu I/O Control History Soft Points LCD Tank Measurements Opcode Table MVS Sensor Radio Power Control MODBUS LCD User List Setup Hart Point Hart Device User Data [User Program Screen]
Meter Menu Set Up Calibration Plate Change History	Utilities Menu Update Firmware Update Hardware Upgrade to FlashPAC Convert Files Download User Prog Security Calibration Values MVS Calibration FST Editor Debug Comms	Tools Menu Customize (Toolbar)	Window Menu Cascade Tile [List of open files]	Help Menu Help Topics About ROCLINK

Customizing Features

Graphical displays can be created for the flow computer that combine both static and dynamic data elements. The displays can then be used to monitor the operation of the flow computer in its application, either locally or remotely.

Security

ROCLINK for Windows software may be secured to fit the needs of the customer. The customer may restrict which authorized users have full access to the software and ROC/FloBoss data, or the customer may restrict an authorized user to one of the six access levels. Changing passwords or access levels is accomplished through the Security screens, available only at the highest access level.

FloBoss and ROCLINK are marks of one of the Emerson Process Management companies. The Emerson logo is a trademark and service mark of Emerson Electric Co. All other marks are the property of their respective owners.

The contents of this publication are presented for informational purposes only. While every effort has been made to ensure informational accuracy, they are not to be construed as warranties or guarantees, express or implied, regarding the products or services described herein or their use or applicability. Fisher Controls reserves the right to modify or improve the designs or specifications of such products at any time without notice.

Emerson Process Management

Flow Computer Division

Marshalltown, IA 50158 U.S.A.

Houston, TX 77065 U.S.A.

Pickering, North Yorkshire UK Y018 7JA

© Fisher Controls International, LLC. 2001-2003. All Rights Reserved.

