



The OCV ValveMeter is a self-contained, electronic, flow measuring system. Based upon the variables of valve differential pressure and valve position, the ValveMeter automatically calculates and displays flow rate, eliminating the need for a separate flow meter or other flow measuring device.

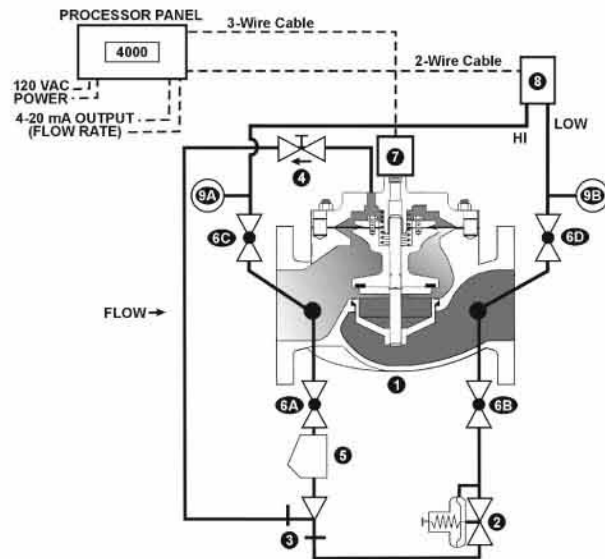
FEATURES

- ▶ Can be added to any modulating type valve (consult factory).
- ▶ Displays flow rate in several different measurement units.
- ▶ Transmittable output.
- ▶ Local totalizer is standard.
- ▶ Digital valve position transmitter not subject to noise or drift.
- ▶ Integral to valve; no orifice plate required.
- ▶ Three basic components; DP Transmitter, Valve Position Transmitter and ValveMeter processor panel.

HYDRAULIC PILOT OPERATED REGULATING VALVE

Shown here applied to any modulating valve (i.e. pressure reducing, rate of flow, etc.) Valve performs the specified control function with flow rate being measured by the ValveMeter.

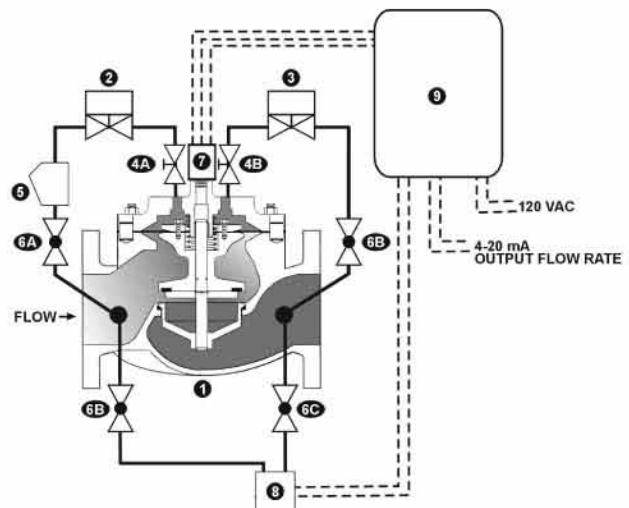
ITEM	DESCRIPTION
1	BASIC VALVE ASSEMBLY
2	HYDRAULIC PILOT
3	EJECTOR
4	SPEED CONTROL VALVE
5	Y-STRAINER
6	ISOLATION BALL VALVE
7	DIGITAL POSITION TRANSMITTER
8	DIFFERENTIAL PRESSURE TRANSMITTER
9	PRESSURE GAUGE



ELECTRONIC DIGITAL CONTROL Rate of flow function

Shown here the applied to a digital control valve the flow rate is both measured and controlled.

ITEM	DESCRIPTION
1	BASIC ASSEMBLY VALVE
2	TWO-WAY SOLENOID PILOT
3	TWO-WAY SOLENOID PILOT
4	NEEDLE VALVE
5	Y-STRAINER
6	ISOLATION BALL VALVE
7	POSITION TRANSMITTER
8	DIFFERENTIAL PRESSURE TRANSMITTER
9	FLOW PROCESSOR/CONTROLLER PANEL



TOLL FREE 1.888.628.8258 • phone: (918)627.1942 • fax: (918)622.8916 • 7400 East 42nd Place, Tulsa, Ok 74145
 email: sales@controlvalves.com • website: www.controlvalves.com

Global performance. **Personal** touch.